

# MUSEUMS & MONUMENTS



**1**  
**Pejo 1914–1918**  
**The War on Our Doorstep**  
Salita San Rocco 1, Pejo Paese

Ph. +39 348 7400942  
museopejo.it

**Opening times:**  
Christmas and Easter periods,  
13th June – 31st July, 23rd August –  
18th September every day  
10–12 am & 4–7 pm; 1st – 28th August  
every day 10–12 am and 3–7 pm;  
by appointment at other periods



**2**  
**Museo della Guerra di Vermiglio**  
**(Vermiglio War Museum)**  
Via di Borgo Nuovo 15, Vermiglio

Ph. +39 0463 758200 Vermiglio Tourist Office  
vermigliovisite.it  
sulletraccedellagrandeguerra.it

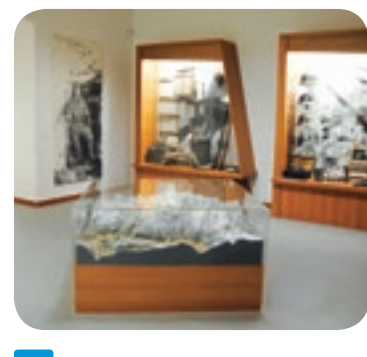
**Opening times:**  
January – March, June and December  
Monday – Saturday 9–12am & 3–6pm;  
July–August: every day 9–12am & 3–6pm;  
at other periods Monday – Friday 9–12am  
& 3–6pm



**3**  
**Forte Strino**  
Via Nazionale (SS. 42), Vermiglio

Ph. +39 0463 758200  
Vermiglio Tourist Office  
vermigliovisite.it  
sulletraccedellagrandeguerra.it

**Opening times:**  
till 31st March every Tuesday and  
Thursday 9–5 pm; 31st May – 17th  
July and 1st – 27th September every  
day 9.30–12.30am and 2.30–5.30 pm,  
18th July – 31st August every day  
9.30am–6.30pm; by appointment at  
other periods



**4**  
**Museo della Guerra Bianca**  
**Adamellina "Recuperanti in Val**  
**Rendena" (Museum of the White**  
**War in the Adamello "Salvage**  
**Archaeology in Rendena")**  
Via San Vigilio 2, Spiazzo Rendena

Ph. +39 0465 801544 Tourist Office  
museoapocdegueerra.com

**Opening times:**  
mid-June – mid-September 3–6pm, closed  
Tuesday; by appointment at other periods



**5**  
**Museo della Grande Guerra in**  
**Valle del Chiese (Museum of the**  
**Great War in Valle del Chiese)**  
Via Chiesa 11, Bersone

Ph. +39 0465 901217  
Valle del Chiese Tourism Consortium  
vistchiese.it  
ecomuseovalledelchiese.it

**Opening times:** by appointment



**6**  
**Museo Garibaldino e della**  
**Grande Guerra (The Garibaldi**  
**and Great War Museum)**  
Via Lungussat Salvatore Greco 14, Bezzeca

Ph. +39 0464 508182  
Museo delle Palafitte (Pile-Dwelling Museum)  
palafitteledro.it  
museoistorico.tr.it

**Opening times:**  
June – September Wednesday – Sunday  
10am–6pm; by appointment at other  
periods; Colle di S. Stefano Church &  
Ossuary May – September 10–1pm &  
3–6pm, closed Monday



**7**  
**MAG Museo Alto Garda**  
Piazza Battisti 3/A, Riva del Garda

Ph. +39 0464 573869  
museoaltogarda.it

**Opening times:**  
12th March – 6th November  
10am–6pm, Monday closed  
June – September every day 10am–6pm  
27th – 30th December / 2nd – 8th  
January 10am–6pm; 31st December  
10am – 5pm



**8**  
**Museo Storico Italiano della**  
**Guerra (Italian War Museum)**  
Via Castelbarco 7, Rovereto

Ph. +39 0464 438100  
museodellaguerra.it



**9**  
**Opera Campana dei Caduti**  
**(Bell of Peace)**  
Colle di Miravalle, Rovereto

Ph. +39 0464 434412  
fondazioneoperacampana.it

**Opening times:**  
January – February November –  
December 9am–4pm  
March and October 9am–6pm  
April – September 9am–7pm



**10**  
**Forte Belvedere-Gschwent**  
**Museum**  
Via Treier Kaiserjäger 1, Lavarone

Ph. +39 0464 780005  
fortebelvedere.org

**Opening times:**  
April – June and September – mid-  
October Wednesday – Sunday  
10am–6pm; July– August every day  
10am–6pm;  
by appointment at other periods



**11**  
**Centro Documentazione Luserna**  
Via Trento 6, Luserna

Ph. +39 0464 789638  
lusern.it

**Opening times:**  
16th April – 2nd November & 26th  
December – 6th January every day 10-  
12.30am & 2–6pm; 1st January 2–6pm;  
by appointment at other periods



**12**  
**Mostra permanente della**  
**Grande Guerra in Valsugana**  
**e sul Lagorai (Permanent**  
**Exhibition on the Great War in**  
**Valsugana & Lagorai)**  
Ex Mulino Spagolla, Vicolo Sottocchia 11,  
Borgo Valsugana

Ph. +39 0461 757195 / +39 0461 754052  
Borgo Valsugana Public Library  
mostradiborgo.it

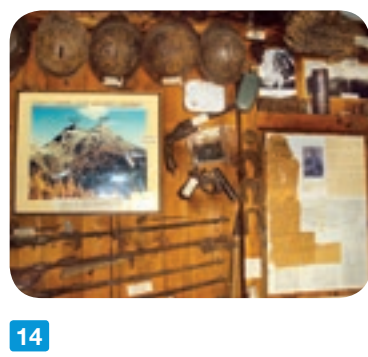
**Opening times:**  
12th March – 6th November  
10am–6pm, Monday closed  
June – September every day 10am–6pm  
27th – 30th December / 2nd – 8th  
January 10am–6pm; 31st December  
10am – 5pm



**13**  
**Mostra permanente della**  
**Grande Guerra sul Lagorai**  
**(Permanent Exhibition on the**  
**Great War in the Lagorai**  
Via Ghiaie, Caoria

Ph. +39 328 8311575 / +39 548 5736704  
Gruppo Alpini di Caoria  
Ph. +39 0439 719106 Ecomuseo Vanoi  
alpinicaoria.it  
ecomuseo.vanoi.it

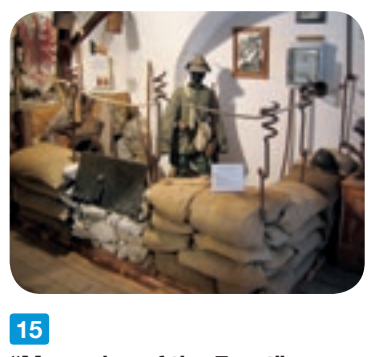
**Opening times:**  
Tuesday – Sunday except public holidays,  
24th, 25th, 31st December, 1st January,  
War Artillery section open May – October  
9.30am–6.30pm; by appointment at  
other periods



**14**  
**Cauriol Refuge Memorabilia**  
**Collection**  
Val Sadole, Ziano di Fiemme

Ph. +39 0461 944888  
museocaproni.it

**Opening times:**  
Tuesday – Friday 10am–1pm & 2–6pm;  
Saturday, Sunday & public holidays  
10am–6pm; closed Monday except  
public holidays, 25th December & 1st  
January



**15**  
**"Memories of the Front"**  
Stalla de la Nenola, Moena-Someda

Ph. +39 334 8222082  
frantedeincordi.it

**Opening times:**  
1st October – 30th April Saturday –  
Sunday & public holidays 10am–1pm  
& 2.30–6pm; 1st May to 30th September  
Tuesday – Thursday 2.30 – 6.30pm, Friday –  
Sunday 10am–1pm & 2.30–6.30pm



**16**  
**Museo della Grande Guerra**  
**1914-18 (Museum of the Great War)**  
Passo Fedia – Canazell

Ph. +39 0462 601181 / +39 347 7972356  
adebermardin@gmail.it

**Opening times:**  
summer only 10–12.30am & 2–5.30pm;  
closed Tuesday



**17**  
**Museo Nazionale Storico degli**  
**Alpini (National Museum of the**  
**Alpine Troops)**  
Trento, Doss Trento

Ph. +39 0461 827248  
museonazionealpini.it

**Opening times:**  
Tuesday – Thursday 9–12am, 1.30–4pm;  
Friday 9–12am; Saturday & public holidays:  
by appointment only, closed Monday



**18**  
**Museo Storico del Trentino**  
**(Museum of the History of Trentino)**  
Via Torre d'Augusto 35–41, Trento

Ph. +39 0461 230482  
museostorico.it

**Opening times:**  
Piedicastello Tunnels (Trento) Tuesday  
– Sunday 9am–6pm; library & archives  
Monday – Thursday 9am–5pm, Friday  
9am–1pm



**19**  
**Museo dell'Aeronautica Gianni**  
**Caproni (Aeronautical Museum)**  
Via Lidorno 3, Trento

Ph. +39 0461 944888  
museocaproni.it

**Opening times:**  
Tuesday – Friday 10am–1pm & 2–6pm;  
Saturday, Sunday & public holidays  
10am–6pm; closed Monday except  
public holidays, 25th December & 1st  
January



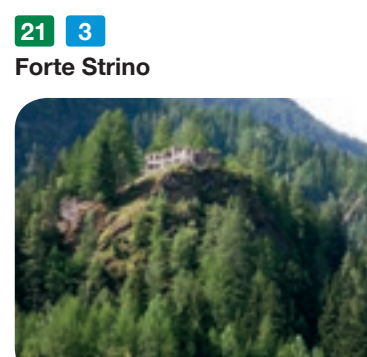
**20**  
**Museo Casa De Gasperi**  
**(De Gasperi House Museum)**  
Pieve Tesino, via Alcide De Gasperi 1

Ph. +39 0461 594382 / +39 0461 314247  
+39 366 6341678  
degasperini.it

**Opening times:**  
1st October – 30th April Saturday –  
Sunday & public holidays 10am–1pm  
& 2.30–6pm; 1st May to 30th September  
Tuesday – Thursday 2.30 – 6.30pm, Friday –  
Sunday 10am–1pm & 2.30–6.30pm

# FORTS, TRENCHES, WAR CEMETERIES & OTHER WORKS

## Val di Sole



**21 3**  
**Forte Strino**

**22**  
**Forte Zaccarana**

**23**  
**Forte Pozzi Alti**

**24**  
**Forte Mero**

**25**  
**Pejo Blockhouse**

**26**  
**Strino Barracks**

**27**  
**Passo Paradiso Tunnel**

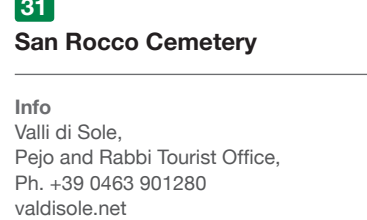


**28**  
**Punta Linke**

**29**  
**Passo Tonale Military Shrine**

**30**  
**Ossana Austro-Hungarian**  
**Military Cemetery**

**31**  
**San Rocco Cemetery**



**32**  
**Forte Larino**

**33**  
**Forte Corno**



**34**  
**Forte Carriola**

**35**  
**Forte Clem - Trenches**

**36**  
**Corno di Cavento**  
**Tunnel**

**37**  
**Bondo Austro-Hungarian**  
**Military Cemetery**

**38**  
**Rio Caino Trenches**

**39**  
**Malga Clef War**  
**Cemetery**

**40**  
**Linea dei Lupi Trenches**

**41**  
**Forte San Nicolò**

**42**  
**Forte Garda**

**43**  
**Forte Batteria di Mezzo**

**44**  
**Forti di Nago**

**45**  
**Colle Santo Stefano**

**46**  
**Dromaé Trenches**



**47**  
**Bosco Caproni Trenches**

**48**  
**Busa dei Capitani**

**49**  
**Monte Nozzolo & Monte Cadria**

**Info**  
Valle di Ledro  
Tourism Consortium,  
Ph. +39 0464 591222  
vallediledro.com  
Ingardia Trentino  
Tourist Office  
Ph. +39 0464 554444  
gardatrentino.it



**50**  
**Forte Valmorbia – Pozzaccio**

**51**  
**Monte Creino Trenches**

**52**  
**Dozzo Casina**

**53**  
**Malga Zures**

**54**  
**Malga Campobrun**

**55**  
**Monte Vignola**  
**Corno della Paura**

**56**  
**Nagià Grom Trenches**

**57**  
**Monte Faé Trenches**

**58**  
**Casteldante Military Shrine**

**59**  
**Matassone Trenches**

**60**  
**Zugna Trenches**

**61**  
**Monte Pasubio**

**62**  
**Cippo di Serravalle**

**63**  
**Villetta Trenches**

**64**  
**Passo Buole**

**65**  
**Marani Trench**

**66**  
**Busoni Artillery**  
**Enplacements**

**67**  
**Forte Dosso delle Somme**

**68**  
**Forte Sommo Alto**

**69**  
**Forte Cherle-Sebastiano**

**70 10**  
**Forte Belvedere-Gschwent**

**71**  
**Forte Campo di Luserna**

**72**  
**Forte Verle (Valsugana)**

**73**  
**Cima Vezzena – Spitz Levico**  
**Observatory (Valsugana)**

**Info**  
Rovereto and Vallagarina  
Tourist Office,  
Ph. +39 0464 430363  
vistrovereto.it

**74**  
**Monte Rust Observatory**

**75**  
**Virti Tactical Command**

**76**  
**Slaghenaufi Austro-Hungarian**  
**Military Cemetery**

**77**  
**Costalta Military Cemetery**

**78**  
**Forte Colle delle Benne**  
**(San Biagio)**

**79**  
**Forte Tenna**

**80**  
**Monte Civerone Cemetery**

**81**  
**Val Maora War Cemetery**

**82**  
**Malga Sorgazza Cemetery**

**83**  
**Caoria Military Cemetery**

**84**  
**Levico Cemetery**

**85**  
**Herta Miller Hospital**

**86**  
**Forcella Magna**

**87**  
**Valmaggione**

**88**  
**War Memorial**  
**at Refavaie Refuge**

**89**  
**Trincerone Italiano di Grigno**  
**(The Great Italian Trench at Grigno)**

**90**  
**Monte Totoga**

**Info**  
Valsugana and Lagorai  
Tourist Office  
Ph. +39 0461 727700  
vistvalsugana.it  
San Martino di Castrozza,  
Passo Rolle, Primiero and Vanoi  
Tourist Office,  
Ph. +39 0439 768867  
sanmartino.com

**91**  
**Forte Dossaccio**

**92**  
**Forte Buso**

**93**  
**Forte Moena-Someda**

**94**  
**Cima Bocche Trenches**

**95**  
**Costabella & Monzoni Trenches**  
**and Tunnels**

**Info**  
Alpe Cimbra Folgaria,  
Lavarone and Luserna Tourist Office  
Ph. +39 0464 724100  
alpecimbra.it  
Valsugana and Lagorai  
Tourist Office  
Ph. +39 0461 727700  
vistvalsugana.it

**96**  
**Italian Underground Passages**  
**at Mesola**

**97**  
**Fango Trenches**

**98**  
**Forte Bus de Vela or Cadine**

**99**  
**Forte Civezzano**

**100**  
**Roncogno Battery on Cimirolo**

**101**  
**Doss Trento – Cesare Battisti**  
**Mausoleum**

**102**  
**Austro-Hungarian Ossuary**

**103**  
**Sorasass Path in Cadine**

**104**  
**Celva Trenches**

**Info**  
Trento, Monte Bondone  
and Valle dei Laghi Tourist Office  
Ph. +39 0461 216000  
discovrento.it



**51**  
**Monte Creino Trenches**

**52**  
**Dozzo Casina**

**53**  
**Malga Zures**

**54**  
**Malga Campobrun**

**55**  
**Monte Vignola**  
**Corno della Paura**

**56**  
**Nagià Grom Trenches**

**57**  
**Monte Faé Trenches**

**58**  
**Casteldante Military Shrine**

**59**  
**Matassone Trenches**

**60**  
**Zugna Trenches**

**61**  
**Monte Pasubio**

**62**  
**Cippo di Serravalle**

**63**  
**Villetta Trenches**

**64**  
**Passo Buole**

**65**  
**Marani Trench**

**66**  
**Busoni Artillery**  
**Enplacements**

**67**  
**Forte Dosso delle Somme**

**68**  
**Forte Sommo Alto**

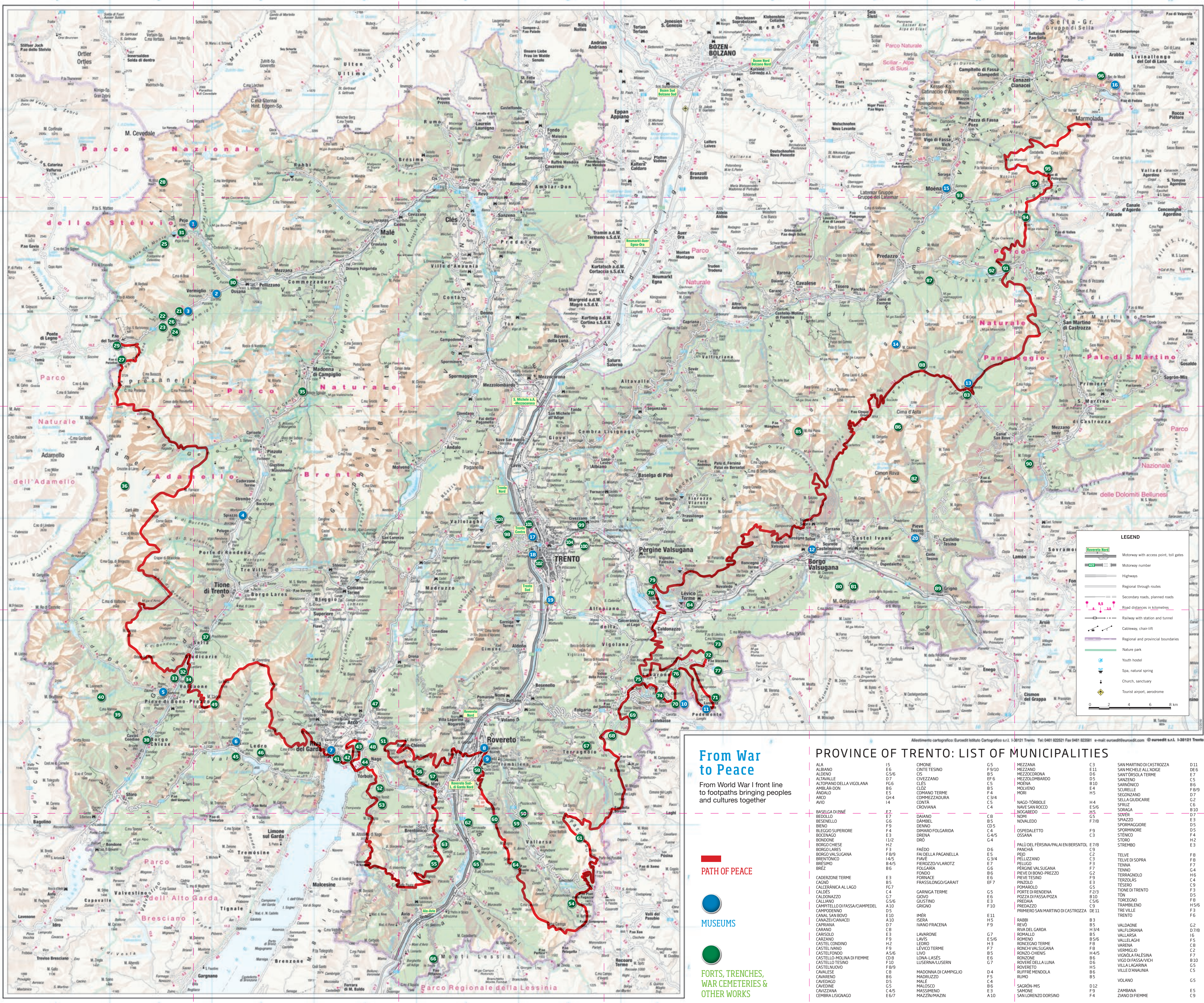
**69**  
**Forte Cherle-Sebastiano**

**70 10**  
**Forte Belvedere-Gschwent**

**71**  
**Forte Campo di Luserna**

**72**  
**Forte Verle (Valsugana)**

**73**  
**Cima Vezzena**



## From War to Peace

From World War I front lines to footpaths bringing peoples and cultures together

PATH OF PEACE

MUSEUMS

FORTS, TRENCHES, WAR CEMETERIES & OTHER WORKS

## PROVINCE OF TRENTO: LIST OF MUNICIPALITIES

ALA	15	CIMONE	G5	MEZZANA	C3	SAN MARTINO DI CASTROZZA	D11
ALBAIANO	E6	CINTE TESINO	F9/10	MEZZANO	E11	SAN MICHELE ALL'ADIGE	DE6
ALDENO	G/6	COVEZZANO	B5	MEZZOCORONA	D5	SANT'ORSOLA TERME	E7
ALTAVALLE	D7	CLES	EF6	MEZZOLOMBARDO	D5	SANZENO	C5
ALTOPIANO DELLA VIGOLANA	F/6	CLONAZZO	G5	MORIERE	B10	SARNONICO	B6/9
AMBIAR-DO	G/5	COMANO TERME	F4	MOLENO	H5	SCURILE	F9/10
ANDALO	E5	CONHEZZADURA	F/4	MORI	E3/4	SECONZANO	D7
ANDALTA	G/4	CONTA	C5	MOVENA	C4	SELLA GIUDICARE	G2
AVIO	I4	CROVIANA	C5	NAGO-TORBOLE	H/4	SFRIZ	C5
BASSELGA DI RENE	E7	DAIANO	C8	NAVE SAN ROCCO	E/4	SORAGA	G10
BEDOLLO	E7	DÄMBEL	B5	NOVALED	F/8	SOVER	E7
BESENELLO	G/6	DENNO	D5	NOMI	G/8	SPAZZAZZO	D3
BLENNO	F9	DIMAR-FOLGARIDA	C4	NOVALED	F/8	SPORMAGGORE	D5
BLEGGIO SUPERIORE	F4	DRENA	C4	OSPEDALETTO	F9	SPORMINORE	D4
BOCENAGO	E3	DRO	G4/5	OSSANA	C3	STENICO	F5
BONDONE	I1/2	FALCONE	G4	OSPEDALETTO	F9	STORO	H2
BORGOCHESE	H2	FALCONE	G4	OSPEDALETTO	F9	STREMO	E8
BORGO LARES	F3	FALCONE	G4	PALU' DEL FERRELLA/PALAI EN BERNSTOL	E7/8	TALVE	F3
BORGO VALSUGANA	C2	FALCONE	G4	PANCHIA	C9	TELVE	E3
BRENTONICO	I4/5	FALCONE	G4	PERG	E5	TELVE DI SOPRA	F8
BRESIMO	B4/5	FALCONE	G4	PELLIZZANO	C3	TENNA	F7
CADERZONE TERME	E3	FALCONE	G4	PELLIZZANO	C3	TENNO	C4
CADORE	E3	FALCONE	G4	PERGINE VALSUGANA	F7	TERRAGNOLLO	H4
CALDERANICA AL LAGO	F/7	FALCONE	G4	PIEVE DI BONO-PREZZO	G2	TERZOLAS	C6
CALDES	C4	FALCONE	G4	PIEVE TESINO	E3	TERZOLAS	C6
CALDONAZZO	G/5/6	FALCONE	G4	PINOLE	E7	TESERO	G5
CALLIANO	G/5/6	FALCONE	G4	POMAROLO	F2/3	TIONE DI TRENTO	C9
CAMPITELLO DI FASSA/CAMPEDEL	A10	FALCONE	G4	PORTO DI RENDONA	F2/3	TÖN	D5
CAMPOMENO	A10	FALCONE	G4	POZZA DI FASSA/POZZA	B10	TORCEANO	H/5/6
CANAL SAN BOVO	E10	FALCONE	G4	PREDIA	E3	TRAMBLENO	F3
CANAZZE/CANAZCI	A10	FALCONE	G4	PREDIZZO	F10	TRE VILLO	F3
CAPRIANA	D7	FALCONE	G4	PRINERO-SAN MARTINO DI CASTROZZA	DE11	TRENTO	G6
CARANNO	C8	FALCONE	G4	RABBI	B3	TRE VILLO	F3
CARSOLO	E3	FALCONE	G4	REVO	B5	TRONTO	G2
CARZANO	F9	FALCONE	G4	RIVA DEL GARDA	B3	VALDADONE	F6
CASTEL CONDINO	H2	FALCONE	G4	ROMALLO	H3/4	VALFLORIANA	D7/8
CASTEL IVANO	F8	FALCONE	G4	ROMALLO	H3/4	VALLARSÀ	I6
CASTELNUOVO	A5/6	FALCONE	G4	ROMENO	B5/6	VALLELAGHI	F5
CASTELLO-MOLINA DI FIEPPE	OB	FALCONE	G4	ROVETO	H3	VARENA	C8
CASTELLO TESINO	F9	FALCONE	G4	ROVETO	H3	VIGNOLIA	F7
CAVARENO	B6	FALCONE	G4	ROVETO	H3	VIGNOLIA/FALENSA	F7
CAVEDAGO	D5	FALCONE	G4	ROVETO	H3	VIGÒ DI FASSA/VICH	B10
CAVEDINE	C5	FALCONE	G4	ROVETO	H3	VILLA LAGRANA	G5
CAVIZZANA	A/5	FALCONE	G4	ROVETO	H3	VILLE PANAJUNA	B5
CEMBRIA/LIGNAGO	E6/7	FALCONE	G4	ROVETO	H3	VOLANO	C5
		FALCONE	G4	ROVETO	H3	ZAMBANA	D12
		FALCONE	G4	ROVETO	H3	ZIANO DI FIEPPE	E9
		FALCONE	G4	ROVETO	H3		

Mappa cartografica: Euroedit Istituto Cartografico s.r.l. - 38121 Trento - Tel: 0461 822521 Fax 0461 822661 e-mail: euroedit@euroedit.com © euroedit s.r.l. - 38121 Trento